



Your Gateway To Financial Wellness

# MONTHLY NEWSLETTER

## June 2026

A wrap-up of important market and product updates of the month  
& upcoming events to watch out for



Your Gateway To Financial Wellness

# TABLE OF CONTENTS

EDITORIAL	3
FOOD FOR THOUGHT	4
INVESTMENT PERSPECTIVES	5
IN THE MONTH AT DHANAVRUKSHA	6
GLOBAL MARKET & NEWS	7
INDIAN INDICES & MARKETS	8
DOMESTIC NEWS	9
COMMODITIES   CURRENCY   SECTORAL INSIGHTS   BONDS	10
INSIGHTS BY THE NUMBERS	11
MUTUAL FUNDS CATEGORY RETURNS	12
FIXED DEPOSITS	14
GIFT CITY FUNDS – For NRIs	15
IPOs LISTED IN JUNE	16
UPCOMING EVENTS IN JULY	17



**As we step into the fifth year of Dhanavruksha's journey, we begin this edition with our heartfelt gratitude for the trust, confidence and unwavering support you have extended to us. Your patronage continues to inspire us as we embark on another year of serving your wealth aspirations with renewed commitment.**

As we enter the second half of the year, global markets appear to have found a renewed sense of stability. The easing of geopolitical tensions between the US and Iran has significantly improved investor sentiment worldwide. One of the natural beneficiaries has been crude oil, with Brent prices retreating from above USD 90 per barrel to the low 70s. For an oil-importing nation like India, this is a welcome development as it eases inflationary pressures, supports corporate profitability and strengthens the country's macroeconomic outlook.

Foreign investor behaviour also reflected improving confidence. While Foreign Institutional Investors (FIIs) continued to remain net sellers in Indian equities, June witnessed the lowest monthly equity outflows in six months. More importantly, robust investments into Indian sovereign debt more than offset equity selling, resulting in overall positive foreign portfolio flows. However, the progress of the southwest monsoon remains a cause of concern, with the country recording a 43% rainfall deficit so far. A prolonged shortfall could have implications for agricultural output and food inflation.

The interest rate environment, meanwhile, continues to provide comfort. Both the Reserve Bank of India and the US Federal Reserve have indicated that an immediate rate hike is unlikely, offering support to financial markets and borrowing conditions.

With geopolitical risks receding, global investors have once again turned their attention towards India's long-term growth story. While the relative lag in India's participation in the global artificial intelligence (AI) theme remains a notable concern, broader sentiment towards the country has strengthened considerably. In a significant endorsement, the Asia-Pacific Chief of BlackRock recently remarked that "India's premium has almost entirely disappeared now," indicating that valuations have become increasingly attractive for long-term investors.

Precious metals witnessed a sharp correction, with gold recording its steepest monthly decline since October 2008, falling nearly 12% during June. In the recent days, AI-related technology stocks globally experienced heightened volatility. While this has led to short-term nervousness, the broader consensus continues to be that the long-term AI growth story remains intact.

Indian markets have transitioned into a phase of cautious optimism, with the prolonged correction likely nearing its end. Attractive opportunities are emerging across large, mid and smallcap segments, while the financial sector is well positioned to lead the next leg of market growth.



## Have We Planned for Retirement or Just for Saving?

Over the past two decades of interacting with investors, I have noticed an interesting pattern. Almost everyone starts investing with one goal – to build a retirement corpus. But somewhere along the journey, investing stops being a plan and becomes a habit.

Many eventually achieve the corpus they had planned. Yet, they don't retire. Retirement is still linked to the age of 58 or 60, not to financial readiness. Some fear losing a monthly salary, some wonder what they will do after retirement, and others worry about family or society's perception.

As the years go by, the retirement corpus simply becomes a bigger number. They continue saving, not because they need to, but because they don't know how to stop. In the end, a large part of the wealth is passed on to the next generation without them enjoying the financial freedom they worked so hard to create.

Building a retirement corpus is important. But equally important is having the confidence to use it when the purpose is achieved.

After all, wealth is meant to support your life—not just your balance sheet.

S.Balaji  
Co-Founder

---

## What Truly Compounds: Trust

Even with all the new AI tools around us, I have learned that a relationship focused way of working is still very important, especially for a founder. I may be a founder by title, but I try to think and act like a relationship manager in my day-to-day work. I believe real, lasting growth comes from our clients—knowing their business well, understanding what they need and staying with them through good and bad times. For me, being a founder is not just about the position. It means staying close to clients, joining important conversations, solving issues quickly and making sure every big decision protects their trust.

“In money and in banking, what really grows over time is not just returns, but trust.” Throughout my journey, one simple idea has guided me, always put the client first. That means listening carefully, asking clear questions and creating solutions that fit each client instead of using one common formula. Whether it is working capital, investments or market linked products, I want every solution to feel customised and timely.

I use new tools, including some AI based analysis, only to support this. They help me see patterns faster and explain things more clearly, but they do not replace my judgement or my relationships. Technology can handle data, but it cannot replace the trust built by regular reviews, honest updates and being available when clients need help.

For lenders, this way of working leads to better structured proposals and early warning on risks, which builds confidence in the business we present. For clients, it shows that we are real partners in their growth. This relationship first thinking will continue to guide me as a founder in the time ahead.

V.Balaji  
Co-Founder



# INVESTMENT PERSPECTIVES

We present here a selection of distinctive investment opportunities identified for our clients, along with the respective investment dates and either the realized exit values or current valuations. For positions that continue to be held, the exit value column has been left blank. The expectation from these picks is to reap high double digit post tax absolute/annualised returns, exceeding the regular diversified funds.

We remain committed to consistently enhancing our clients' portfolio performance through rigorous research, disciplined analysis, and a sharply focused investment approach. By closely tracking and interpreting the broader spectrum of domestic and global markets, we aim to stay ahead of evolving trends and dynamics. This enables us to identify, evaluate, and deliver the most compelling investment opportunities to our clients at the right time.

FUND	PICKED DATE	PICKED PRICE / NAV	EXIT DATE / PRICE (18-Jan-26)	CURRENT PRICE (30-June-26)	RETURN (ABSOLUTE)	RETURN (ANNUALISED)	INVESTED (₹)	VALUE OF ₹1 LAC INVESTED
TATA Capital Markets Fund	06-Dec-25	12.559	-	14.94	18.97%	33.61%	1,00,000	1,18,970
Axis Greater China	09-Apr-25	6.52	-	11.32	73.62%	60.11%	1,00,000	1,73,620
Silver Price per Ounce (\$)	01-Apr-25	33.00	102	-	209.09%	261.36%	1,00,000	3,09,090
Invesco Global Consumer Trends Fund	05-Jul-25	10.44	-	14.27	36.70%	37.21%	1,00,000	1,36,703
Kotak Global Emerging Mkts	07-Jan-26	32.03	-	40.82	27.45%	57.59%	1,00,000	1,27,452
Nippon India Japan Equity Fund	18-Mar-26	24.66	-	26.86	8.91%	31.29%	1,00,000	1,08,914
Nippon India Taiwan Equity Fund	18-Mar-26	24.71	-	36.39	47.28%	165.95%	1,00,000	1,47,284 ★
Axis Global Innovation Fund	20-Apr-26	17.10	-	18.21	6.49%	33.37%	1,00,000	1,06,491
Nippon India Realty Fund	15-Apr-26	7.137	-	7.88	10.40%	49.97%	1,00,000	1,10,405
ICICI Pru Energy Opportunities Fund	22-Apr-26	11.49	-	11.64	1.31%	6.91%	1,00,000	1,01,305
TATA India Consumer Fund	24-Apr-26	43.526	-	46.26	6.29%	34.26%	1,00,000	1,06,290

**Disclaimer:** Please note that these should not be construed as investment recommendations. Such opportunities are suitable only for investors with a high-risk appetite, and their performance is highly dependent on timing of entry and exit. We encourage you to consult with us before considering any exposure to these investments.

## IMPORTANT INDUSTRY DEVELOPMENTS

- The RBI has raised concerns over rising commissions of insurance agents and intermediaries. The central bank warns that higher commission leads to mis-selling of life insurance policies.
- AlphaGrep Mutual Fund forays into MF industry with AlphaGrep Multi Asset Allocation Fund
- Baroda BNP Paribas Mutual Fund has announced changes in the fund management responsibilities of few schemes.

We closely monitor industry developments that may influence your investments and remain vigilant in taking timely, appropriate measures to protect your portfolio.



# IN THE MONTH AT DHANAVRUKSHA

## Empowering Aspiring Banking & Finance Professionals

As part of our commitment to promoting financial literacy and career awareness, Dhanavruksha Financial Services conducted an engaging career guidance session for over **100 banking aspirants at the Institute of Banking Studies, Kayamkulam, Kerala**. The interactive session provided students with valuable insights into the evolving Banking, Financial Services, and Insurance (BFSI) industry, highlighting diverse career opportunities beyond traditional PSU banking roles.

The discussion focused on the importance of developing strong communication skills, acquiring domain knowledge, embracing continuous learning, and building a long-term career rather than simply securing a job. Students were also encouraged to explore emerging opportunities in wealth management, financial planning, capital markets, fintech, and entrepreneurship.

The session witnessed enthusiastic participation from students, reinforcing our commitment to empowering young minds through financial education and career guidance.





INDEX	Monthly Change
NASDAQ	-2.81%
S&P 500	-1.06
FTSE	0.84%
DOW JONES	2.52%
SHANGHAI COMPOSITE	0.63%

## US Fed Meet



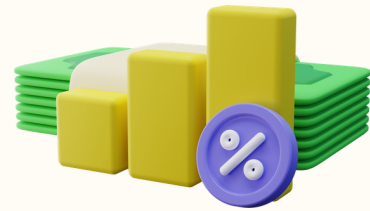
At its June meeting, the first under the new chair Kevin Warsh, the US Federal Reserve kept interest rates unchanged at 3.5%–3.75%. However, policymakers signalled a more hawkish stance, with nearly half expecting at least one rate hike by the end of 2026 to address persistent inflation.

## SpaceX Debuts



World's largest IPO, SpaceX, was priced at \$135 per share and debuted on Nasdaq at \$150, further pushing the company's valuation above \$2tn

## Rate Hike



The Bank of Japan (BOJ) increased its policy interest rate from 0.75% to 1.00%, taking rates to their highest level in about three decades.

## China PMI Eases



China's manufacturing activity slowed in May, with the Manufacturing PMI falling to 50.0 from 50.3 in April, signaling a moderation in factory-sector growth.

## KOSPI Rally



KOSPI, which delivered 90% in 2026 so far, is awaiting a possible upgrade by MSCI on June 23rd to be included in the watchlist for developed market status. The promotion can attract around \$30 billion as benchmark-tracking funds rebalance their portfolios.



# INDIAN INDICES & MARKETS

Index	Closing Points	Monthly Change
NIFTY 50	23,865.75	1.35%
SENSEX	76,478.67	2.28%

## SECTORAL PERFORMANCE

NIFTY IT	26,299.05	9.56%
NIFTY BANK	57,542.90	6.09%
NIFTY AUTO	26,479.80	0.54%
NIFTY MIDCAP 150	22,774.25	0.90%
NIFTY SMALLCAP 250	17,720.30	4.29%
Nifty 500	22,995.65	1.49%

## FII & DII INFLOWS (Rs in Cr.)

CATEGORY	BUY AMT	SELL AMT	NET AMT
FII/FPI	340,120.27	389,148.90	-49,028.63
DII	422,821.98	337,021.84	85,800.14

## RBI MPC Meet



The RBI left the repo rate unchanged at 5.25% in its June 2026 monetary policy review, maintaining its neutral stance while monitoring inflation and growth trends.

## Korea & Taiwan exceed India



Korea and Taiwan which are smaller economies than India have surpassed India by stock market capitalisation.

## Growth Momentum



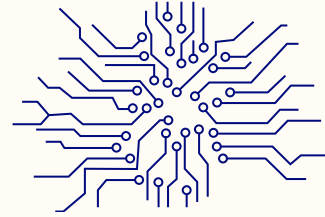
Strong consumption has kept economic growth momentum steady in the June quarter. The economy grew 7.8% in the March quarter, lifting FY26 growth expectations to a pace of 7.7%.

## Wholesale Inflation



Wholesale inflation rose to a record 9.7% YoY in May, the first reading under the revised WPI series with 2022-23 as base year. The latest reading was higher than April's 8.3%.

## IT Expansion



Europe is emerging as the next growth market for Indian IT services providers, with the region accounting for more than a third of the new delivery centres opened by top companies last fiscal.

## Oil Imports



Oil imports to India back on track, Russia supplies over half: Imports more than 5mn barrels per day (mbd) in June, above average of 4.9 mbd between Apr'25 & Feb'26.

Fiscal deficit narrows to 4.4% of GDP in FY26 on prudent spending.

Govt has formulated an integrated policy to develop the main airports of Delhi, Mumbai and Bengaluru into international transit centres as an alternative to Dubai, Abu Dhabi & Doha.

## CAD Narrows



Goldman Sachs cuts India's CAD forecast to 1.3% of GDP for 2026. Projects Balance of Payments (BoP) surplus of 0.6% of GDP after 2 years of deficits.

## Bond Inclusion



India plans to make a renewed pitch for inclusion of its sovereign debt in major global bond gauges, including the Bloomberg Global Aggregate Index, after offering relief from capital gains and withholding taxes on interest income for foreign investors in specified G-Secs.



PARTICULARS	31ST MAY 26	30TH JUNE 26	% CHANGE
10 YEAR G-SEC	7.003	6.753	3.57
GOLD (10GM)	1,61,460	1,45,510	-9.88
BRENT CRUDE	8,046.53	6,906.17	-14.17
USD/INR	95.00	94.67	0.35

## SECTORAL INSIGHTS

- **Indian IT Under Pressure:** The Indian Nifty IT Index recorded its weakest first-half performance since 2001, declining nearly 31% between January and June. Tepid client spending, subdued revenue guidance, mounting concerns over AI-led disruption and broader macroeconomic headwinds have dragged both large- and mid-cap IT stocks to multi-year lows.
- **Manufacturing moderates:** India's manufacturing growth moderated in June as softer growth in new orders and export demand led to slower expansion in production, hiring, and purchasing activity. The HSBC Manufacturing PMI eased to 54.2 from 55 in May, marking the second-weakest improvement in the sector since mid-2022.

## BONDS

SECURITY	CREDIT RATING	YIELD
GOI -2035	SOVEREIGN	6.52%
TATA CAPITAL LIMITED 2028 (SECURED)	AAA BY CRISIL & ICRA	7.25%
HIGH YIELD - PIRAMAL FINANCE LIMITED 2031 (SECURED)	AA BY ICRA & CARE	8.91%

**Note :** These are just a few bonds from the available list. Rates and availability changes based on demand. Bonds with higher yields also available but carry higher risk



# INSIGHTS BY THE NUMBERS

This page contains global and domestic data which provides insights on markets, sectors, businesses and the economy

China kept its benchmark Loan Prime Rates unchanged for the 13th consecutive month, signaling a cautious monetary policy stance amid uneven economic recovery.

CAD widens to \$25.2 billion in FY26 from \$22.9 billion in the previous fiscal, even as the deficit for the last quarter stood at 0.6% of GDP. This was despite a \$1.1 billion surplus in the quarter, driven by higher remittances and services exports.

Goldman Sachs has raised India's 2026 real GDP growth forecast to 6.8% from 6.5% after US-China peace deal.

SK Hynix goes past Samsung, now tops South Korea's stock market with \$1.35 trillion market cap.

ICRA: Occupancy of the hospitality industry at 66–68% in the first 2 months of FY27. Expected to be at 72–74% for the full FY.

Exports up 15% till June 14 despite uncertainty.

PM to release ₹2,400 Cr under jobs scheme. Around 1.5 million first-time employees and employers to receive incentives under PM-VBRY.

Government targets a 69% jump in FY27 rural road construction, aiming at 26,147 km in this fiscal year.

RBI will have to bear at least half the hedging cost of 3.5–4% to make it viable for PSUs to raise debt abroad.

Life insurers' premium income up 19% in April–May.



# MUTUAL FUND CATEGORY RETURN : EQUITY

CATEGORY	YTD	1 Month	3 Months	1 Year	3 Years	5 Years	10 Years
Equity : LargeCap	-5.07	1.43	10.23	-3.04	11.06	10.6	12
Equity : Large & Midcap	-0.9	2.04	13.75	-0.08	15.22	13.89	14.19
Equity : Flexi Cap	-1.42	2.49	13.5	-0.74	12.95	12.07	13.07
Equity : Multicap	1.59	2.91	16.61	1.43	16.15	14.38	--
Equity : Midcap	3.04	1.71	17.58	3.94	19.02	16.58	15.99
Equity : Smallcap	8.36	4.88	24.35	3.99	18.27	16.77	16.65
Equity : Value Oriented	-2.43	0.29	9.83	1.29	15.14	13.39	13.97
Equity : ELSS	-2.79	2.47	12.32	-2.69	12.36	12.03	13.4
Equity : Sectoral Banking	-1.75	5.35	14.34	3.34	12.65	12.84	12.74
Equity : Sectoral Pharma	12.21	5.32	16.95	12.72	22.37	13.83	14.01
Equity : Sectoral Technology	-23.67	-6.4	-0.77	-24.35	1.97	2.57	14.23
Equity : Thematic Energy	10.65	-2.71	12.96	7.47	18.71	14.16	16.5
Equity : Infrastructure	6.32	1.46	17.68	4.24	20.4	19.88	16.05
Equity : Thematic-PSU	-1.24	-1.84	6.14	-2.05	26.05	24.3	15.84
Equity : International	17.5	-3.01	16.42	39.37	24.39	12.25	12.75

Returns as on 30th June 2026. Returns less than 1 year are absolute and above 1 year are annualised.



# MF CATEGORY RETURN : HYBRID & DEBT

CATEGORY	YTD	1 Month	3 Months	1 Year	3 Years	5 Years	10 Years
Hybrid : Aggressive	-1.3	2.11	10.13	-0.26	11.5	10.6	11.35
Hybrid: Equity Savings	0.61	1.31	4.26	3.06	8.36	7.66	8.04
Hybrid: Arbitrage	2.78	0.84	1.25	5.68	6.63	5.77	5.59
Hybrid: Dynamic Asset	-1.43	1.72	7.32	-0.03	9.61	8.73	9.08
Hybrid: Multi Asset	0.7	-0.12	6.48	9.12	14.89	13.1	10.55
Debt : Long duration	2.78	3.47	5.38	3.15	6.47	5.8	6.86
Debt : Medium duration	3.23	1.92	2.81	6.05	7.41	6.87	6.84
Debt : Short duration	2.71	1.63	2.3	5.21	6.91	6.15	6.49
Debt : Low duration	2.91	1.16	1.87	5.9	6.94	6.16	6.36
Debt : Ultra short	3.11	0.93	1.84	6.07	6.7	5.93	5.85
Debt : Liquid	3.2	0.62	1.75	6.18	6.82	6.05	5.99
Debt : Money Market	3.08	1.09	1.86	6.15	7.05	6.25	6.44
Debt : Overnight	2.46	0.41	1.24	5.14	6.03	5.48	5.02
Debt: Corporate Bond	2.75	1.8	2.48	5.29	7.15	6.08	6.92
Debt : Credit Risk	4.87	1.55	3.39	8.22	9.04	9.4	6.46
Debt : Banking & PSU	2.73	1.77	2.43	5.25	6.99	6.04	6.97
Debt : Gilt	2.83	2.78	4.27	3.55	6.48	5.5	6.7
Commodities : Gold	5.27	-9.65	-3.94	44.9	32.87	23.34	14.92
Commodities : Silver	-1.92	-14.44	-2.65	106.92	46.11	--	--

Returns as on 30th June 2026. Returns less than 1 year are absolute and above 1 year are annualised.



# FIXED DEPOSITS

Company	Tenure in months	Cumulative	Monthly	Quarterly	Half Yearly	Annual	Sr Citizen
<b>MAHINDRA FINANCE</b>	12	6.60%	6.40%	6.45%	6.50%	6.60%	0.25% Addition
	24	7.00%	6.80%	6.80%	6.90%	7.00%	
	36	7.00%	6.80%	6.80%	6.90%	7.00%	
	48	7.00%	6.80%	6.80%	6.90%	7.00%	
	60	7.00%	6.80%	6.80%	6.90%	7.00%	
<b>HDFC BANK</b>	12	6.25%	-	-	-	6.25%	6.75%
	24	6.45%	-	-	-	6.45%	6.95%
	36	6.45%	-	-	-	6.45%	6.95%
	60	6.40%	-	-	-	6.40%	6.90%
<b>BAJAJ FINANCE</b>	12-17	6.60%	6.41%	6.44%	6.49%	6.60%	0.35% Addition
	18 - 30	6.85%	6.64%	6.68%	6.74%	6.85%	
	31-60	7.40%	7.16%	7.20%	7.27%	7.40%	
<b>SHRIRAM FINANCE</b>	12	6.75%	6.55%	6.59%	6.64%	6.75%	0.50% Addition
	24	7.05%	6.83%	6.87%	6.93%	7.05%	
	36	7.25%	7.02%	7.06%	7.12%	7.25%	
	48	7.25%	7.02%	7.06%	7.12%	7.25%	
	60	7.25%	7.02%	7.06%	7.12%	7.25%	
	0.05% Additional for Women Depositors						
<b>PNB HOUSING FINANCE LTD</b>	12 - 23	6.60%	6.41%	6.44%	6.49%	6.60%	0.25% Addition
	24 - 35	6.75%	6.55%	6.59%	6.64%	6.75%	
	36 - 47	6.90%	6.69%	6.73%	6.79%	6.90%	
	48 - 59	6.90%	6.69%	6.73%	6.79%	6.90%	
	60	6.90%	6.69%	6.73%	6.79%	6.90%	
<b>ICICI HOME FINANCE</b>	12-24	6.75%	6.50%	6.55%	-	6.75%	0.35% Addition
	24 -36	6.85%	6.60%	6.65%	-	6.85%	
	36 - 48	6.90%	6.65%	6.70%	-	6.90%	
	48 - 60	7.00%	6.75%	6.80%	-	7.00%	

Rates as on 6<sup>th</sup> May 2026



# GIFT CITY FUNDS - For NRIs

- **GIFT City Funds offer a host of benefits like seamless investing without the need to be in India while investing, investments and redemption in USD and favourable taxation to NRI investors and Foreign Nationals from any country.**
- **Particularly, US & Canada NRIs investors can invest in Mutual Fund schemes in India when not in India, in USD, without the hurdle of paying tax on accrued notional gains every year.**
- No TDS(Tax Deducted at Source) on redemption proceeds. On fund management charges and other charges, GST will not be levied

## GIFT CITY FUNDS ON OFFER

<b>Fund Name</b>	<b>Brief about the Fund</b>
<b>Gifty City Fund AIFs investing in Stocks &amp; Other Assets (Non-MF) Minimum investment - USD 150,000</b>	
ValueQuest GIFT Fund	Invests 75% of the money in a concentrated portfolio of listed Indian high growth stocks(15-20) and upto 25% into anchor investments in to-be listed companies
Motilal Oswal Founders Strategy	The fund predominantly aims to invest in Indian businesses where the founders' stake would be more than 26%. The fund aims to invest in businesses whose owners have a long horizon and have displayed quality of governance
WSB Real Estate Debt Fund III	Typical investments in non-convertible, optionally convertible, compulsorily convertible debentures, etc, fully secured by underlying collateral. Quarterly payouts made(tentatively 3.25-3.5% per quarter)
<b>Gifty City Funds by Mutual Funds (Min- USD 150,000)</b>	
HDFC AMC	HDFC Flexicap Fund, Midcap Opportunities Fund, Smallcap Fund & HDFC Balanced Advantage Fund
Mirae AMC	Invest in a Mix of Mirae Largecap Fund, Midcap Fund, Nifty Smallcap250 Momentum Quality 100 ETF FOF, Consumer Fund & Nifty Manufacturing ETF FOF

**Reach out to us to know more about GIFT City Funds and other Gift City products**



# IPOs LISTED IN JUNE

NAME	ISSUE PRICE	ISSUE SIZE	LISTING PRICE	LISTING GAIN/LOSS %
CMR Green Technologies Ltd.	₹192	₹630.62 Cr	₹262	34.46%
Hexagon Nutrition Ltd.	₹45	₹138.87 Cr	₹48	6.66%
Turtlemint Fintech Solutions Ltd.	₹152	₹883 Cr	₹136.20	-10.39%
Waterways Leisure Tourism Ltd.	₹808	₹585 Cr	₹690	-15.72%
Advit Jewels Ltd.	₹138	₹165 Cr	₹187	35.51%



## EVENTS IN JULY

---

Date	Events
22 <sup>nd</sup> July 2026	European Central Bank (ECB) Monetary Policy Meeting
29 <sup>th</sup> July 2026	US Federal Monetary Policy Meeting
30 <sup>th</sup> July 2026	Bank of England (BoE) Monetary Policy Meeting
31 <sup>st</sup> July 2026	Bank of Japan (BoJ) Monetary Policy Meeting

## TO WATCH OUT FOR IN JULY

- **Q2 Earnings Season Begins:** The April–June quarterly earnings season gets underway, with results from the IT, banking and automobile sectors expected to provide important cues on corporate performance and market direction for the months ahead.
- **U.S. Data Points:** Monthly consumer price index (CPI) and employment data will heavily influence the interest rate trajectory.
- **Monsoon :** The progress of the monsoon, which has been below expectations so far, will remain a key factor to watch as it could significantly influence inflation, rural demand and overall consumption.
- **AI Shake up :** Global AI and semiconductor stocks, including Nvidia, Samsung and SK Hynix, have witnessed sharp corrections in recent days, weighing on their respective markets. Their performance will remain under close watch given their dominant influence on global equities. However, any moderation in the AI-driven rally could potentially redirect investor flows towards markets like India, which had lagged amid the global AI boom.

---

# CONTACT US:



75/77, KG MARINA BAY, SANTHOME HIGH ROAD,  
CHENNAI 600004



[WWW.DHANAVRUKSHA.IN](http://WWW.DHANAVRUKSHA.IN)



+91 73058 88454  
044 - 4506 6434



[customerservice@dhanavruksha.in](mailto:customerservice@dhanavruksha.in)



## DHANAVRUKSHA

Wealth Management | Equities, Mutual Funds, Portfolio Management  
Services, AIFs, NPS, Bonds, Deposits, Unlisted Shares.  
Insurance | Business Loans | Venture Capital

Your Gateway To Financial Wellness

---